

A photograph of a three-story Victorian-style terraced house. The house features a prominent bay window on the first floor with white decorative brackets. The ground floor has a green door and a dark door, both with arched transoms. The house is surrounded by a large, dense hedge. The sky is blue with some clouds. The word 'Castles' is written in a red, gothic-style font in the top right corner.

Castles

ASKING PRICE

£475,000

Beresford Road

Hornsey, N8 0AG

Castles

PROPERTY SUMMARY

Occupying a prime position on the popular Haringey Ladder is this recently refurbished, bright and spacious, first floor apartment. Comprising two-bedrooms, generous reception, kitchen and bathroom and further benefitting from ample storage.

Conveniently located within a short stroll to Turnpike Lane Tube station a short walk to Wood Green shopping centre.

The property will be sold on a chain free basis.

Lease: 148 years unexpired (Lease: 189 years from 25/12/84)

Current Service/Maintenance Charge: Not applicable

Ground Rent: Not applicable

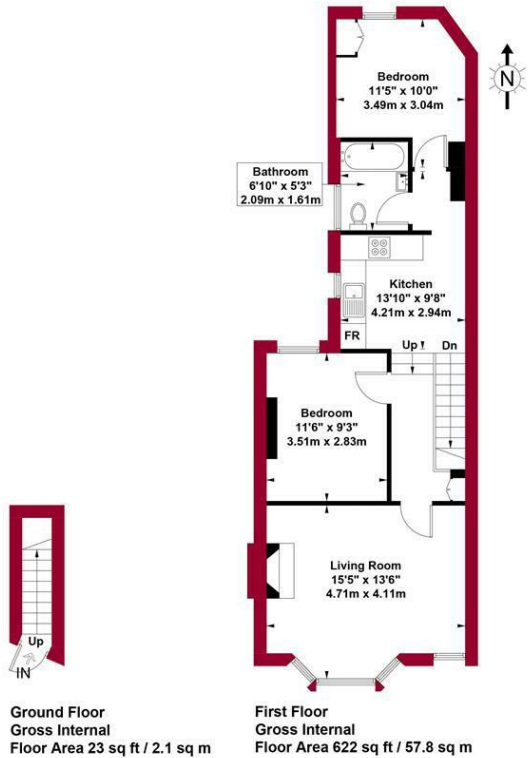
Local Authority: Haringey

Council Tax band: B

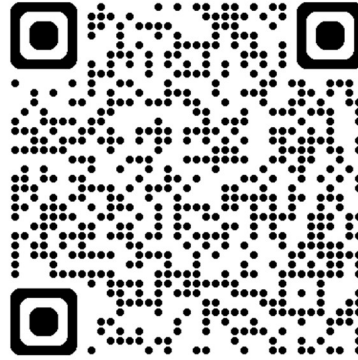




Beresford Road, N8 Approximate Gross Internal Area = 645 sq ft / 59.9 sq m



For a guide to the area please scan this code for more information



Flat - First Floor
 Leasehold
Council: Haringay
Council Tax Band: B



This plan is for layout guidance only and is not drawn to scale unless stated. All dimensions, including windows, doors, and the Total Gross Internal Area (GIA), are approximate. For precise measurements, please consult a qualified architect or surveyor before making any decisions based on this plan.



Agents Note: Whilst every care has been taken to prepare these particulars, they are for guidance purposes only. All measurements are approximate and are for general guidance purposes only and whilst every care has been taken to ensure their accuracy, they should not be relied upon and potential buyers/tenants are advised to recheck the measurements



OFFICE ADDRESS

12 Topsfield Parade
 Crouch End
 London
 N8 8PR

OFFICE DETAILS

020 8348 5515
 crouchend@castles.london
<https://www.castles.london>

